



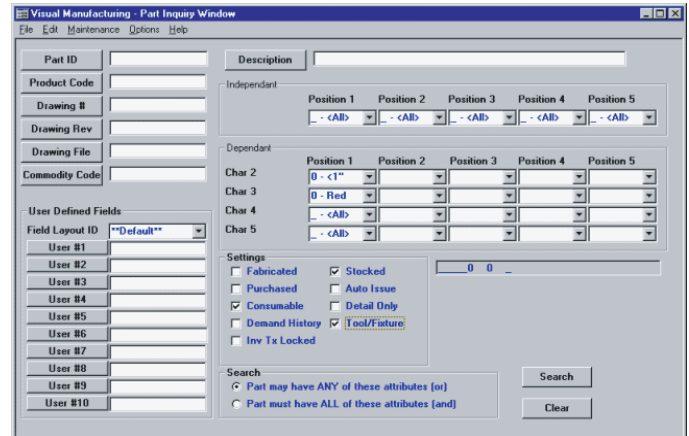
# Part Inquiry

Version 2.0

\$275 (USD)

Part Inquiry enables technical users to categorize and query part numbers based on numerous attributes to better manage and avoid duplication of part masters. A

Commodity Code Builder is used to classify parts based on user definable attributes in a drill down fashion. Once a specific part has been located all engineering related information is presented in one concise place. Part Inquiry shows up under the 'Tools' menu and operates similar to Customer Inquiry and Vendor Inquiry.



## Benefits

- Avoid creating duplicate part numbers by finding close matches to existing part numbers
- Establish and enforce part number structure throughout VISUAL
- Engineering information empowers users to make decisions without extensive knowledge of VISUAL

## Features

- Search for parts based on over 20 different attributes using “any” or “all” criteria
- Images, specifications, inventory locations, and Engineering Change Notice summaries are available for each part
- Tools to build a fully custom, multi-level “decision tree” commodity code classification system
- Sample commodity code categories included
- Assign commodity codes using the Commodity Code Builder
- Automatically create part descriptions based on the commodity code

For more information go to our web site and click on Products.

The Virant Group  
1548 Clemson Drive  
Eagan, MN 55122

Phone: 651.688.2317  
Fax: 651.688.8043  
E-mail: [info@virant.com](mailto:info@virant.com)  
[www.virant.com](http://www.virant.com)